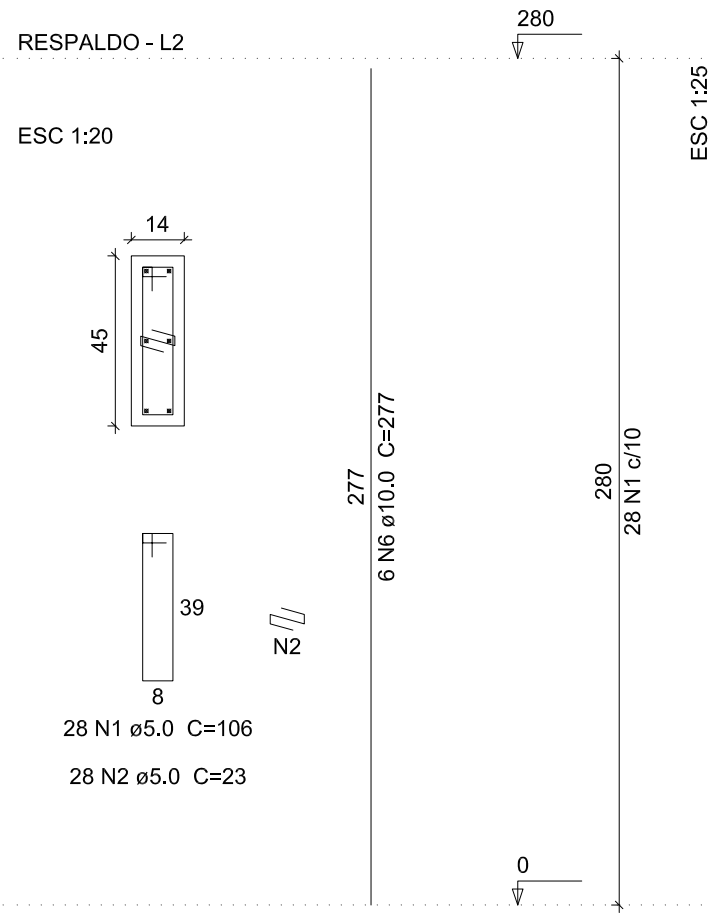
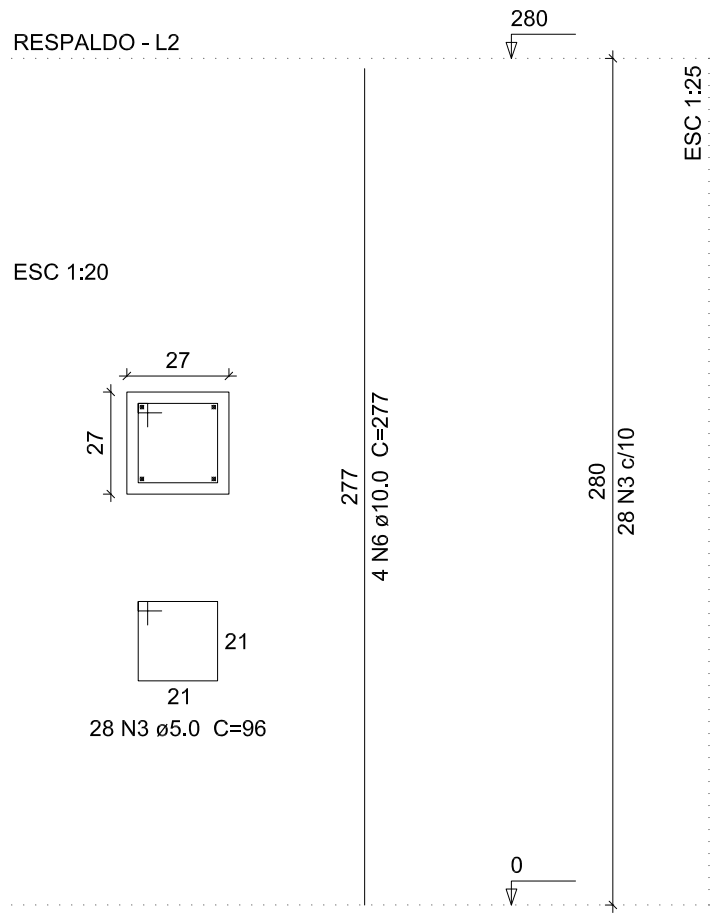


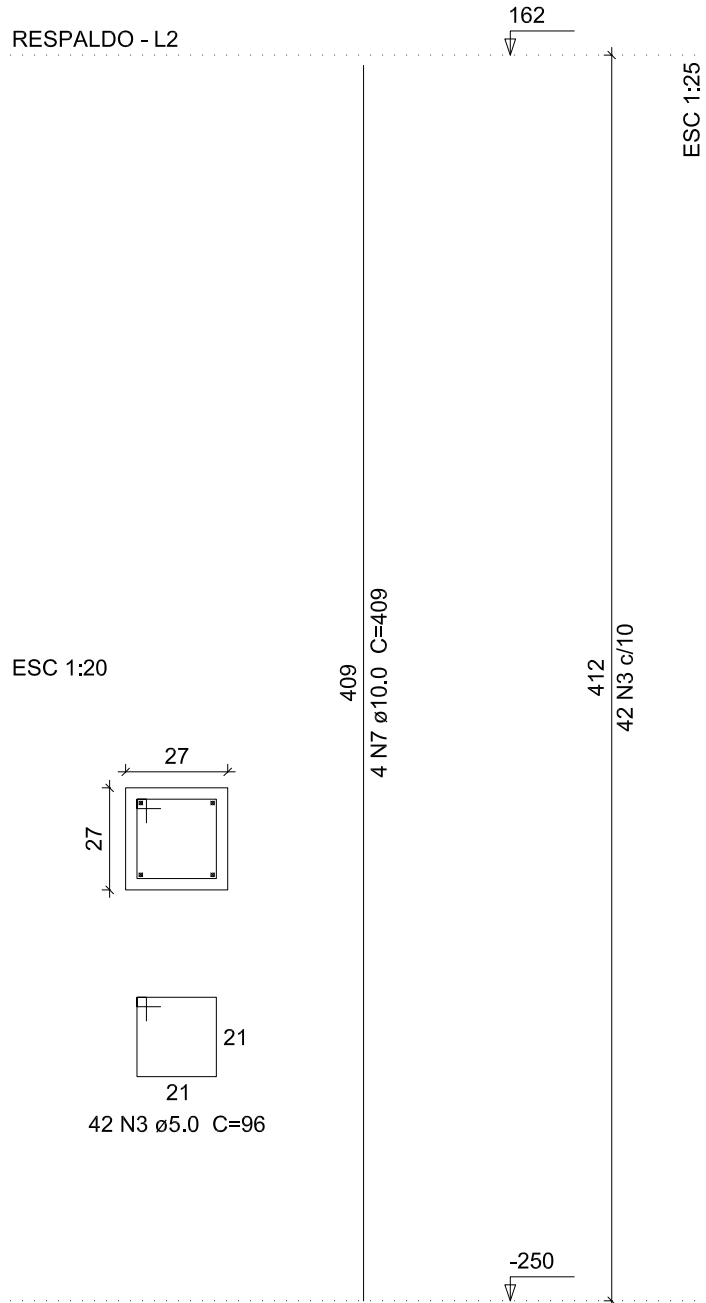
P1=P3=P5=P7=P20=P34=P35



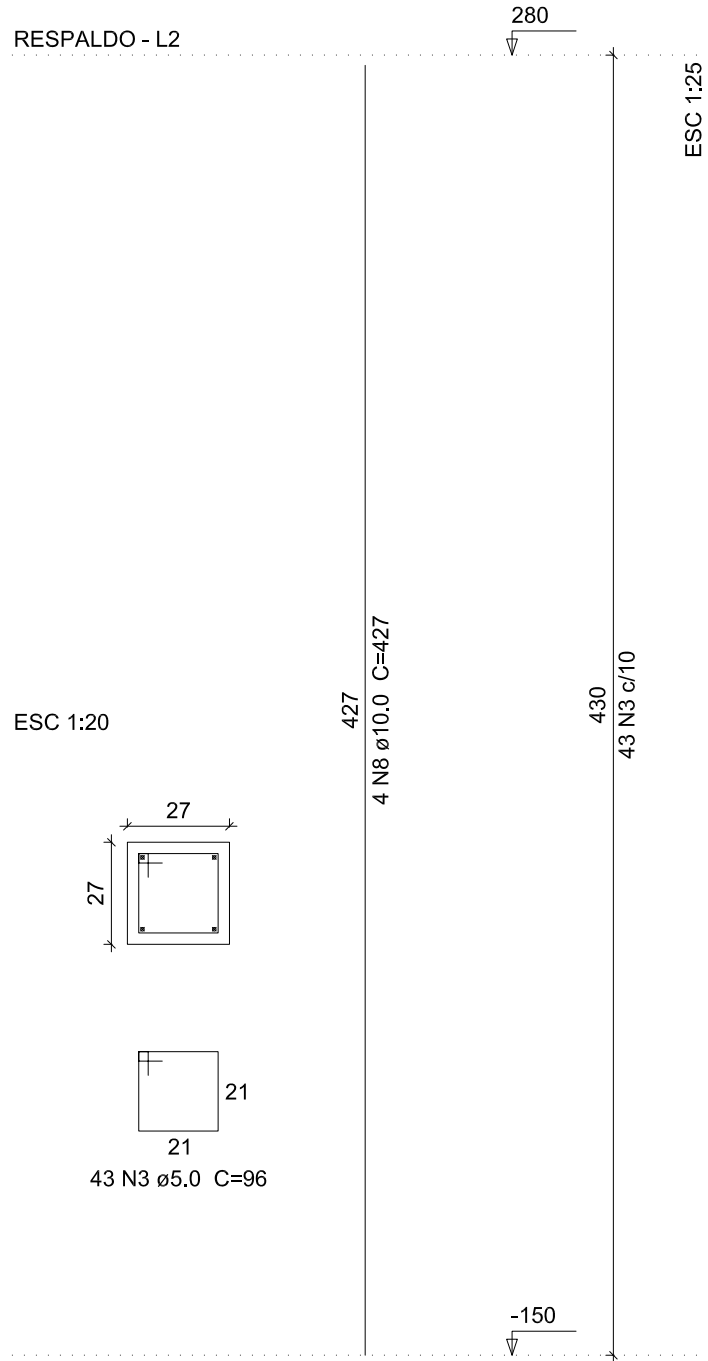
P13=P17=P18=P25=P26=P31



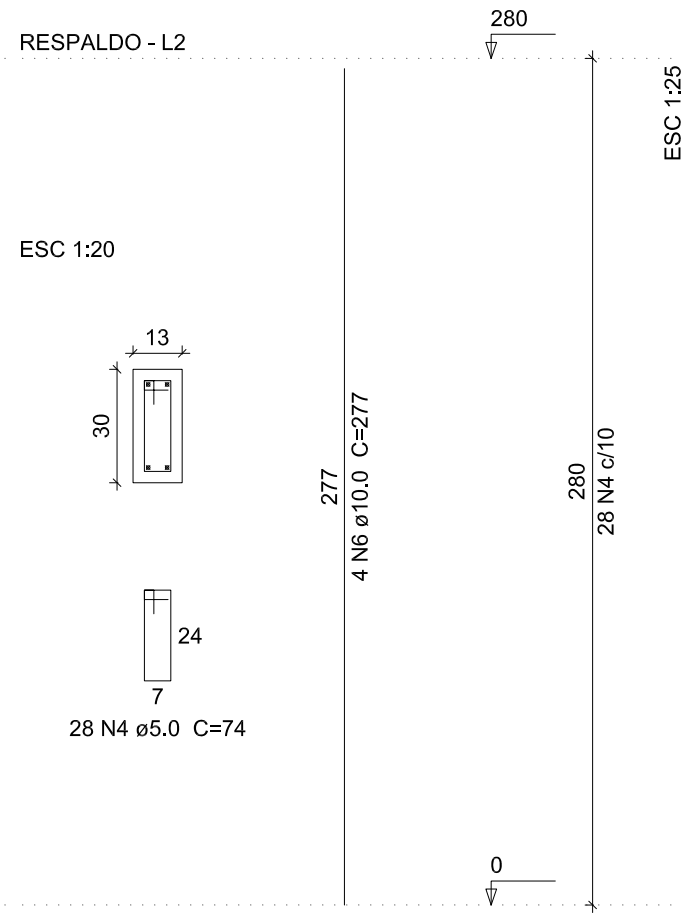
P15=P23



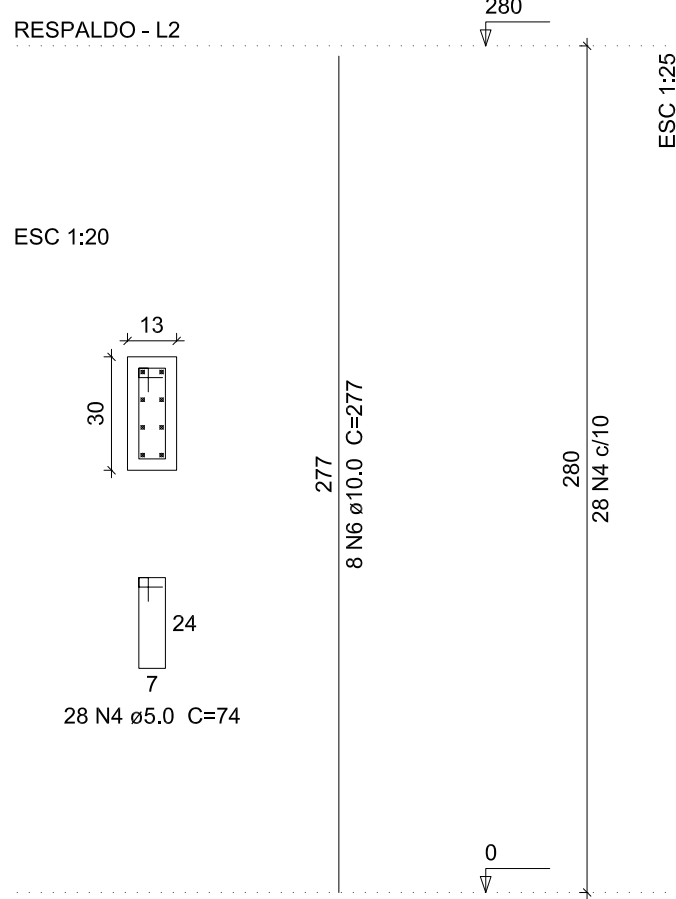
P16=P24



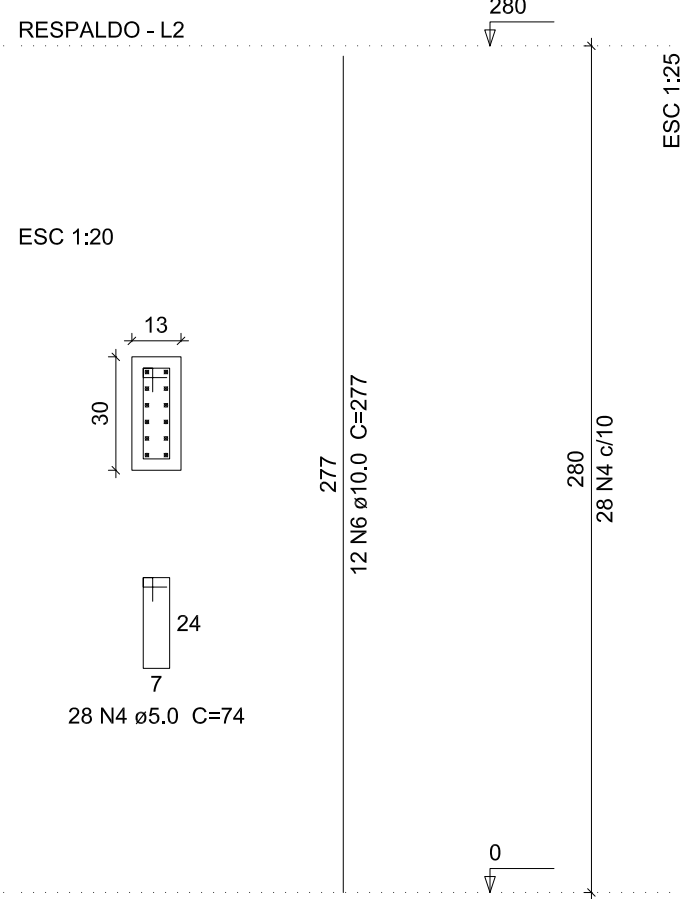
P2=P4=P6=P9=P10=P11=P12=P14=P19=P21=P28=P37



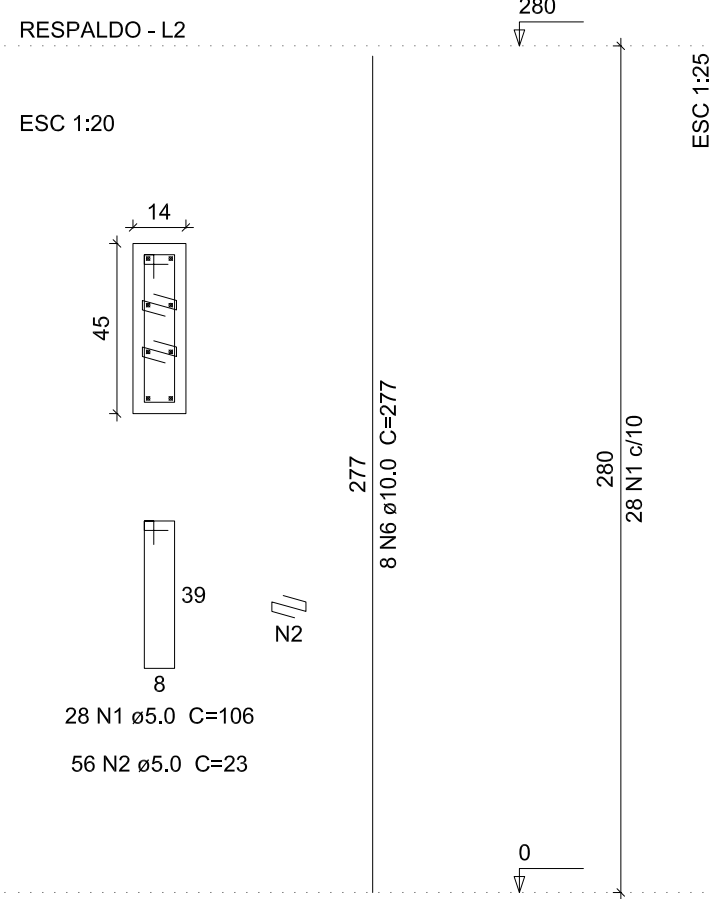
P27=P32=P33



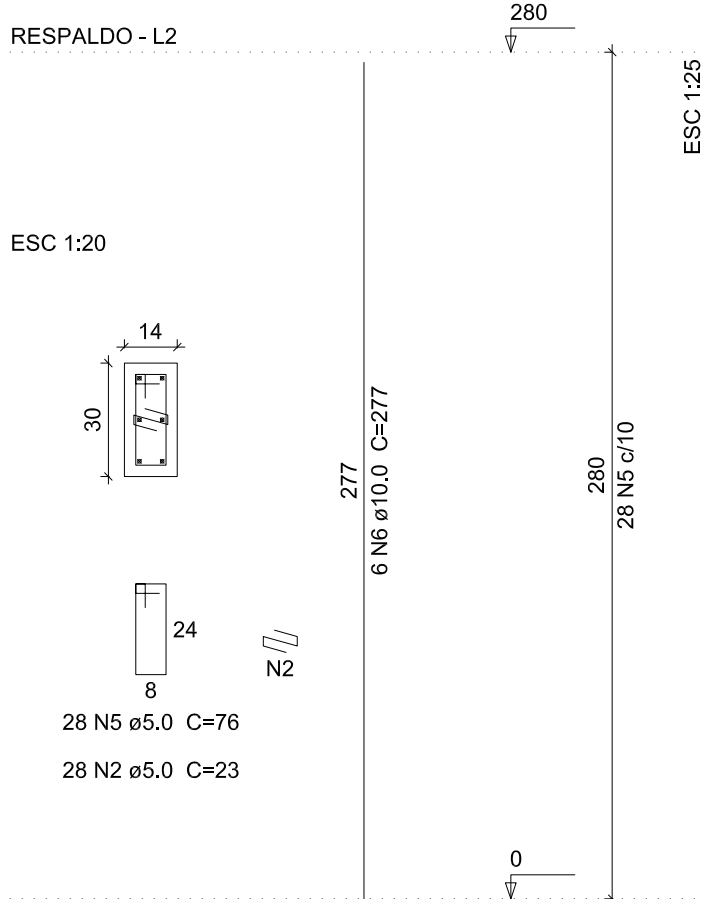
P29



P8=P36=P38=P39



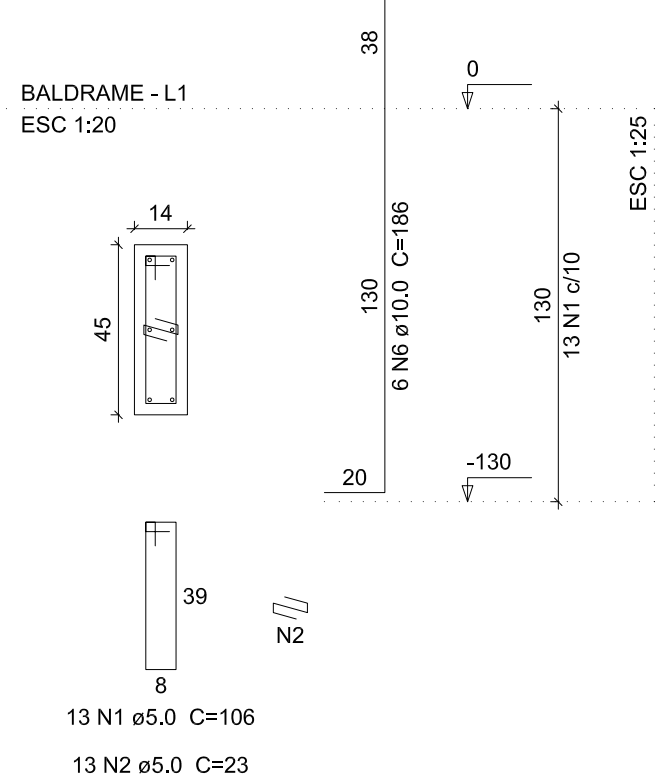
P22=P30



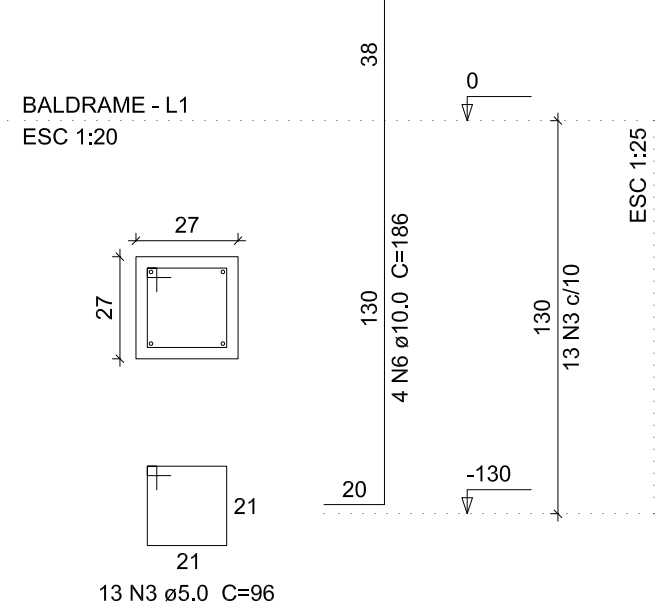
DETALHAMENTO DOS PILARES

ESCALA: INDICADA

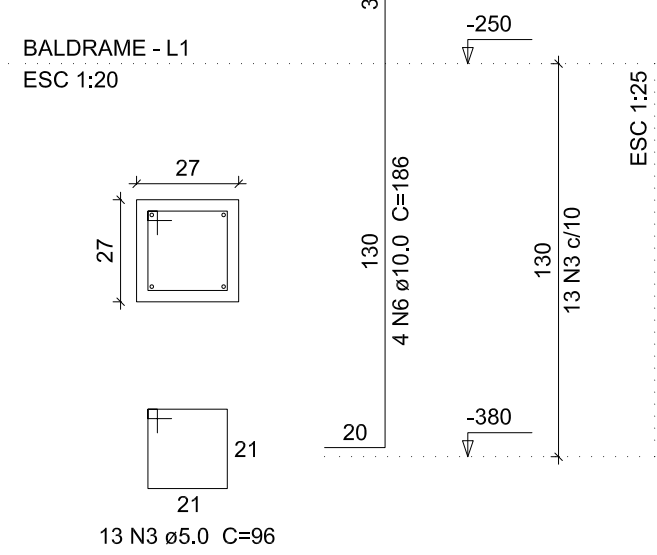
P1=P3=P5=P7=P20=P35



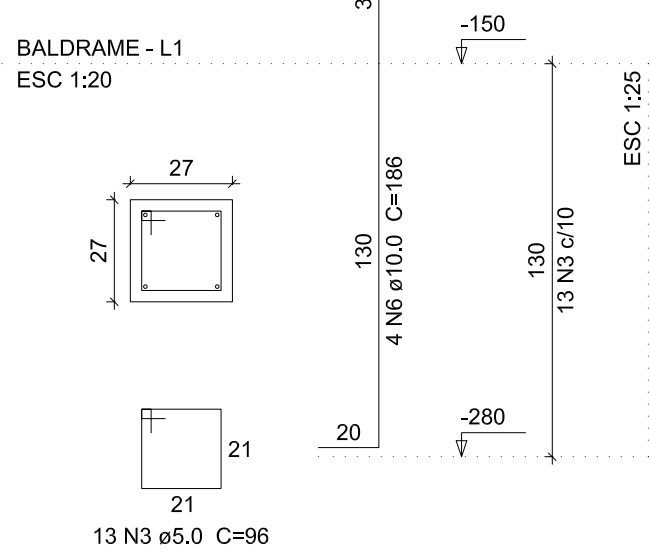
P13=P17=P18=P25=P26=P31



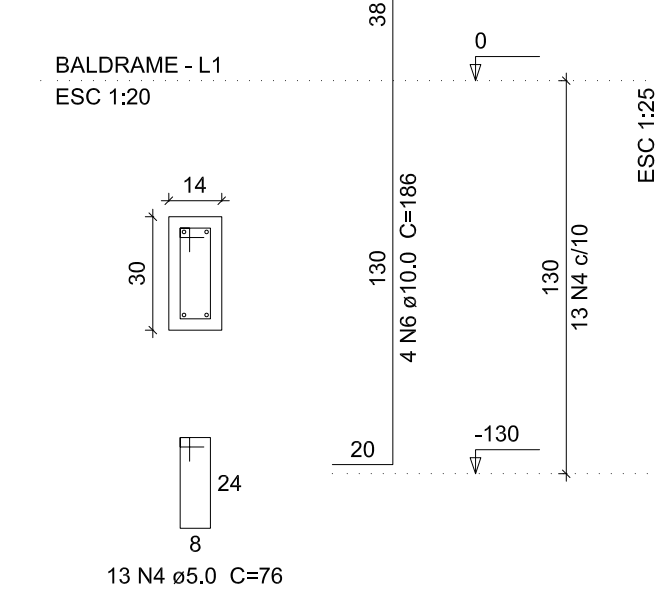
P15=P23



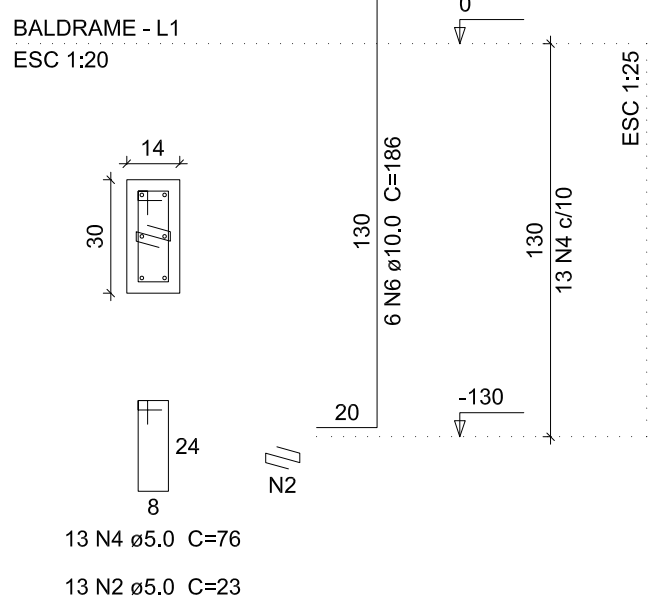
P16=P24



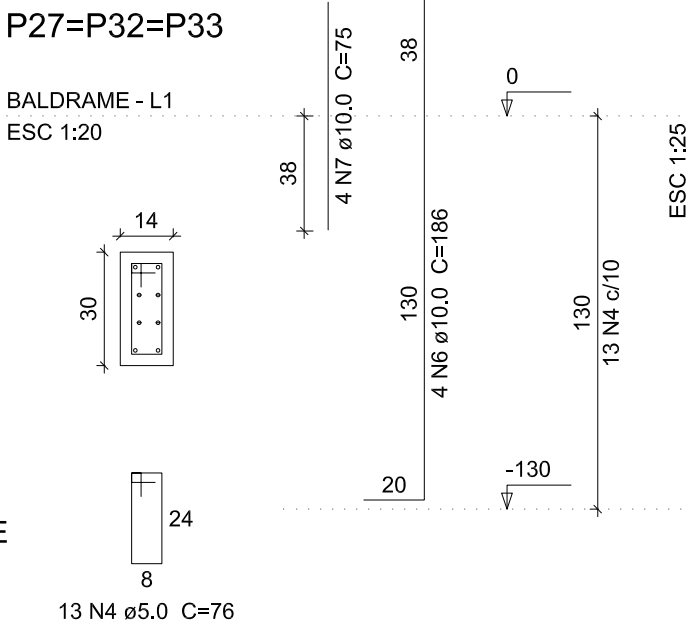
P2=P4=P6=P10=P11=P12=P14=P19=P21=P28=P37



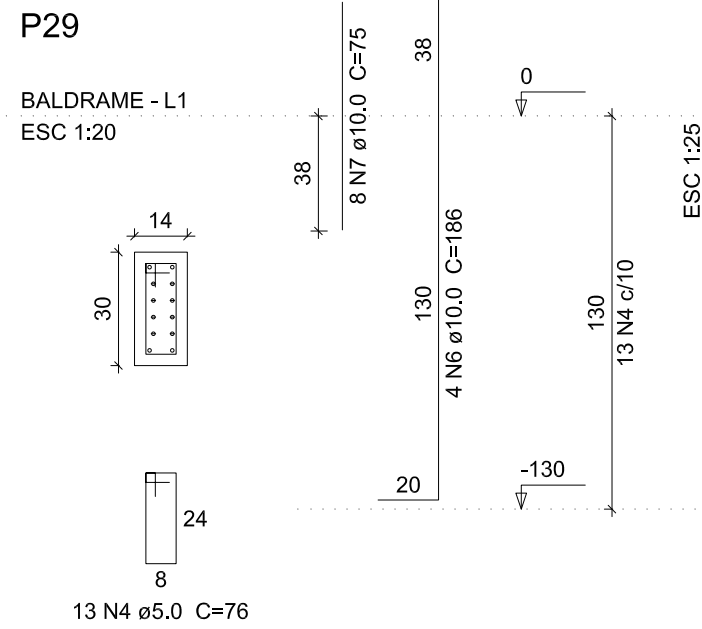
P22=P30



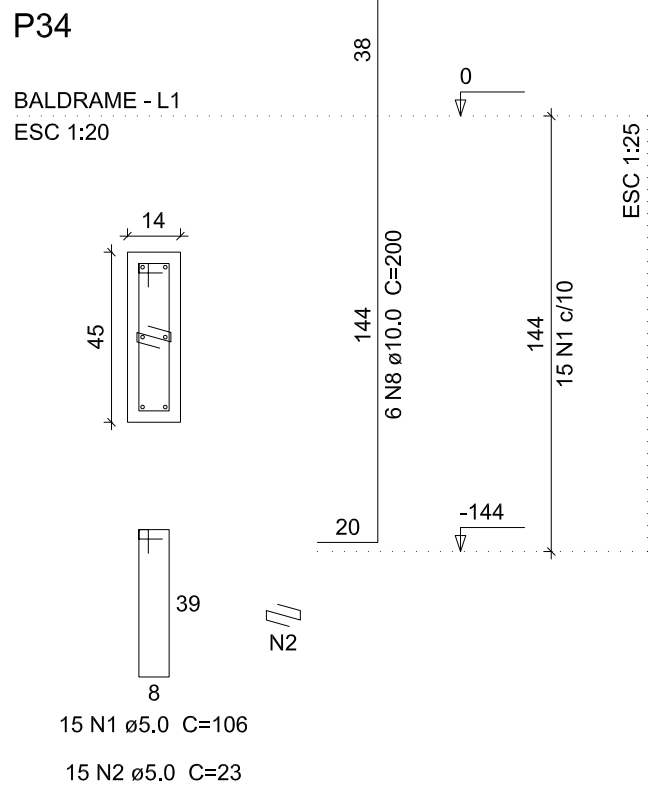
P27=P32=P33



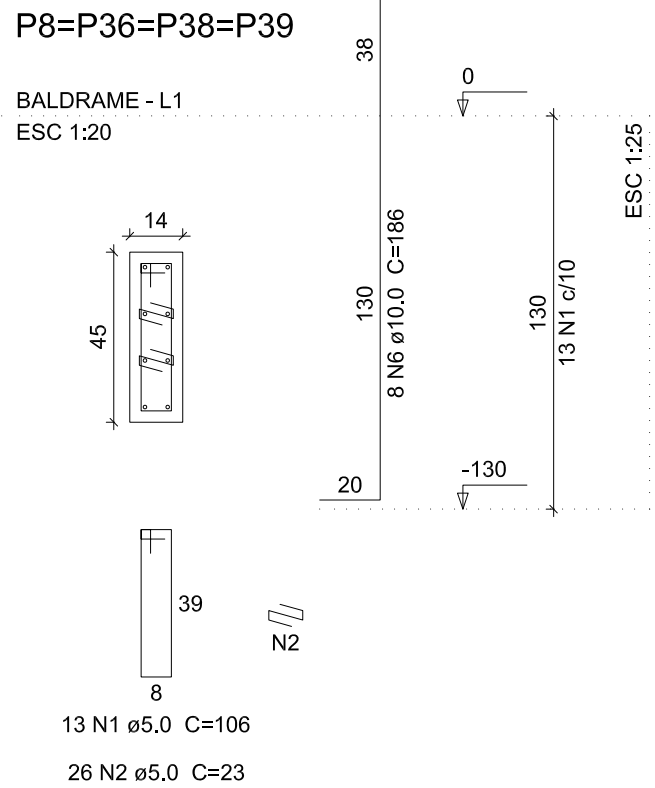
P29



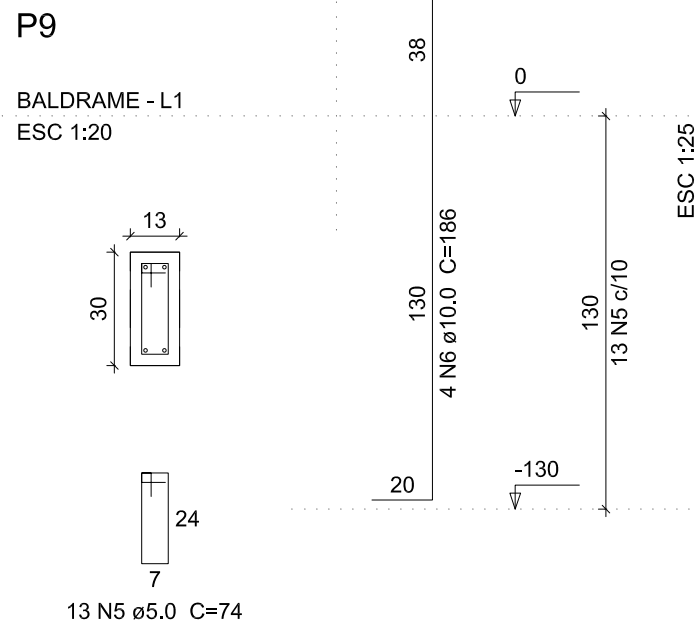
P34



P8=P36=P38=P39



P9



DETALHAMENTO DOS PILARES ARRANQUE

ESCALA: INDICADA

Relação do aço

7xP1	12xP2	4xP8
6xP13	2xP15	2xP16
2xP22	3xP27	P29

AÇO	N	DIAM	Q	UNIT (cm)	C.TOTAL (cm)
CA60	1	5.0	308	106	32648
	2	5.0	476	23	10948
	3	5.0	338	96	32448
	4	5.0	448	74	33152
CA50	5	5.0	56	76	4256
	6	10.0	194	277	53738
	7	10.0	8	409	3272
	8	10.0	8	427	3416

Resumo do aço

AÇO	DIAM	C.TOTAL (m)	PESO (kg)
CA50	10.0	804.3	372.5
CA60	5.0	1134.6	174.9
PESO TOTAL			
CA50	372.5		
CA60	174.9		

Vol. de concreto total (C-25) = 6.38 m³
Área de forma total = 116.13 m²

Relação do aço

6xP1	11xP2	4xP8
P9	6xP13	2xP15
2xP16	2xP22	3xP27
P29	P34	

AÇO	N	DIAM	Q	UNIT (cm)	C.TOTAL (cm)
CA60	1	5.0	145	106	15370
	2	5.0	223	23	5129
	3	5.0	130	96	12480
	4	5.0	221	76	16796
CA50	5	5.0	13	74	962
	6	10.0	184	186	34224
	7	10.0	20	75	1500
	8	10.0	6	200	1200

Resumo do aço

AÇO	DIAM	C.TOTAL (m)	PESO (kg)
CA50	10.0	369.3	227.7
CA60	5.0	507.4	78.2
PESO TOTAL			
CA50	227.7		
CA60	78.2		

Vol. de concreto total (C-25) = 2.84 m³
Área de forma total = 51.65 m²



GERÊNCIA DE PROJETOS E INFRAESTRUTURA
APROVADO
TÉCNICO RESPONSÁVEL PELA APROVAÇÃO

C.E. PROF. JOAQUIM FRANCISCO SANTIAGO

AMPLIAÇÃO E REFORMA

ENDEREÇO
RUA XAVANTES COM AV. BERNADO SAYÃO, SETOR EVEREST,
NIQUELÂNDIA - GO

ÁREA DO TERRENO	ÁREA EXISTENTE	ÁREA DE REFORMA	ÁREA A CONSTRUIR DAS PASSARELAS	ÁREA TOTAL A CONSTRUIR	ÁREA TOTAL
9.609,99m²	-	-	488,78m²	3.591,01m²	3.591,01m²

AUTOR: FÁBIO EMMANUEL MATOS PERIOTTO | CAU: A1080090

RT DA OBRA:

PROPRIETÁRIO: SECRETARIA DE ESTADO DA EDUCAÇÃO CNPJ: 01.409.705.0001-20
PREPOSTO: JESSICA ALVES BUENO SOUSA CPF: 033.178.021-62

ESTRUTURAL BLOCO ADM

TIPO DE PROJETO

DETALHAMENTO PILARES E PILARES DO ARRANQUE

ASSUNTO:

DATA: JUNHO/2022
ESCALA: INDICADA
REVISÃO: 000
Nº RRT/ART:

REV.	DATA	DESCRIÇÃO	VISTO

8/9

FOLHA: